

LINKR

POWERED BY XER△TIC

PRODUCT DATASHEET

---

XERATIC LinkR

# DATA QUALITY SOLUTIONS

Xeratic LinkR is data quality management tools to solve data linkage and data management issues for Indonesian dataset. We empower users to transform raw data into high-quality information, facilitating data operators and analysts in conducting various data-related tasks, including analysis, insight generation, and making informed business decisions. In today's era of ongoing digital transformation, decentralized and duplicated data poses significant challenges to maintaining data quality, a factor that contributes to the failure of 80% of analytics processes, primarily due to manual data preparation and poor data handling.

## WHAT WE DO

### DATA MATCHING & DEDUPLICATION

Xeratic LinkR helps to identify fast if your business data had duplicated or similar data using a friendly ruleset configuration and scoring mechanism tailored to your needs,

- Identify data that fails to comply with business rules and standards
- Deduplication templates are defined by our experience mostly in Indonesia Datasets
- Adjustable/Customizable scoring threshold
- Identify duplicate data in each row of records
- Deduplicate and cleanse inconsistent and redundant data
- Scan data from existing data matching results for further review and action

## HOW IT WORKS

As simple as Input-Process-Output. Xeratic makes it as easy as it sounds (See Figure 1. How Xeratic LinkR Works)

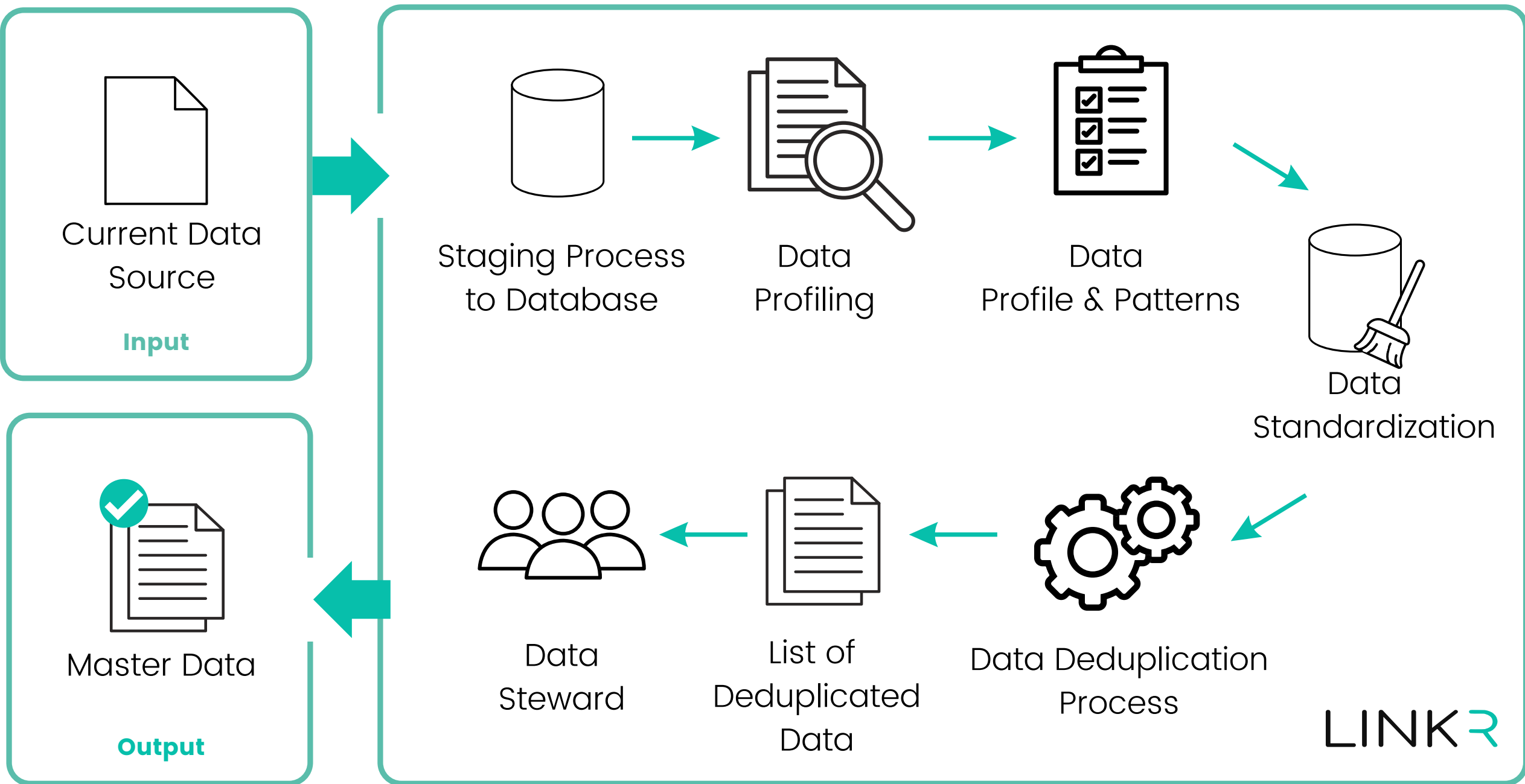


Figure 1. How Xeratic LinkR Works

# KEY FEATURES & BENEFITS

## WHY LINKR

Data Deduplication is just one of our superior feature which includes lots of main features and other feature developments.

- On Demand Ruleset Configuration
- Collaborative Data Stewarding
- Data Profiling Check
- Audit Log
- Multi-user configurations
- Rule-based Data Standardization

## Collaborative Data Stewarding

Bridging all data users into one web portal view. Governing a massive data has never been easy and straightforward for all data owners. The automated matching results are presented to the data handlers in a singular portal view and simplify the stewarding process transparently with an auditable historical logs to track changes on your data treatment. (See Figure 2. Collaborative Data Stewarding)

Xeratic LinkR makes it easy for you and it allows you to fix the result directly or you can also export the result or produce master dataset to other database in your data flow pipeline.

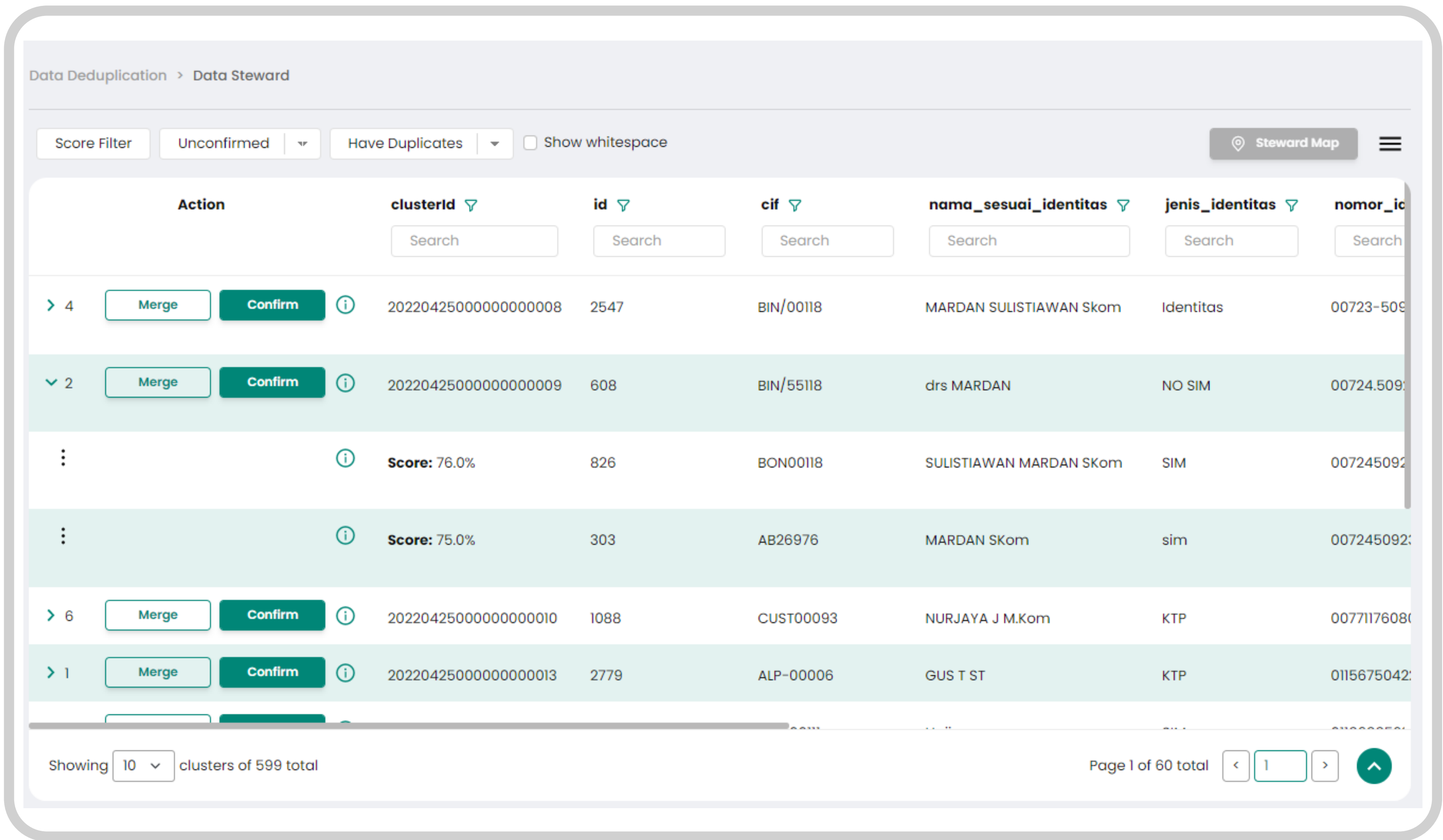


Figure 2. Collaborative Data Stewarding



Data Standardization

By using the Data Standardization feature, users can create new tables, add new columns containing standardized data by making configurations according to user needs. The Standardized data will be used in the data deduplication process and improve deduplication results accuracy. (See Figure 3. Card View Summary Data Standardization and Figure 4. Domain Manager Data Standardization)

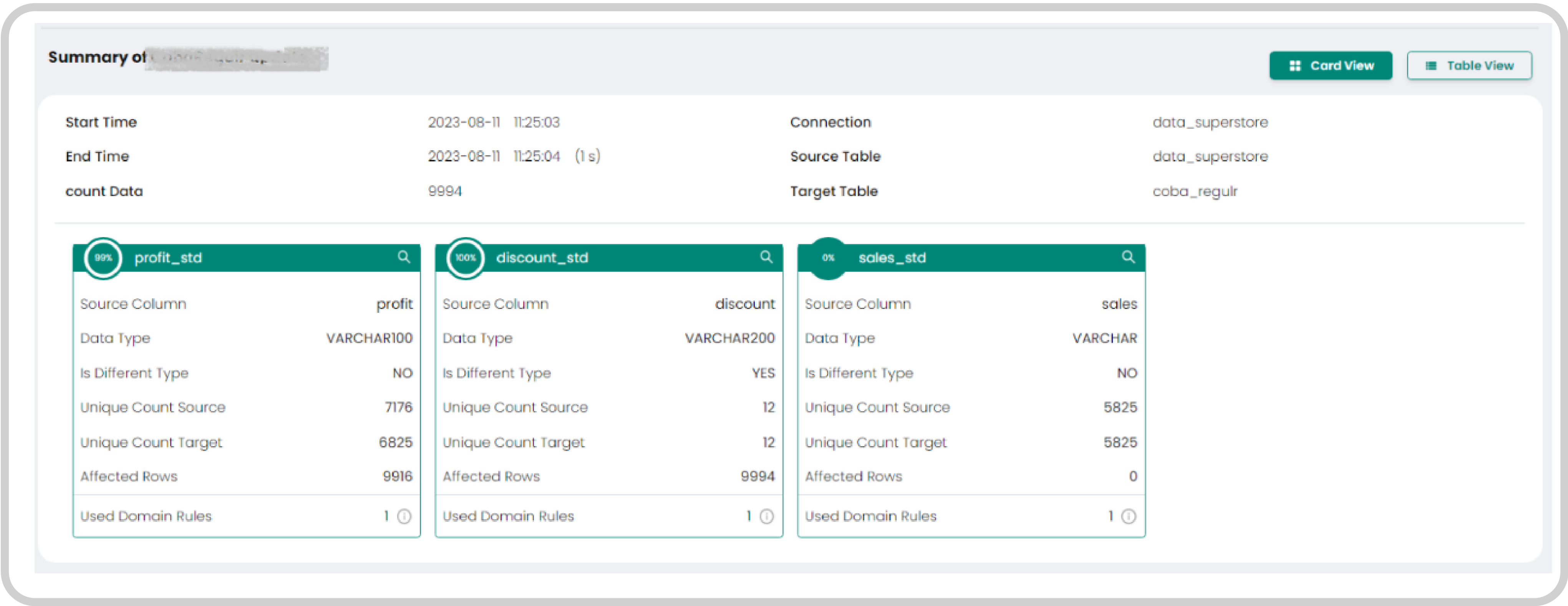


Figure 3. Card View Summary Data Standardization

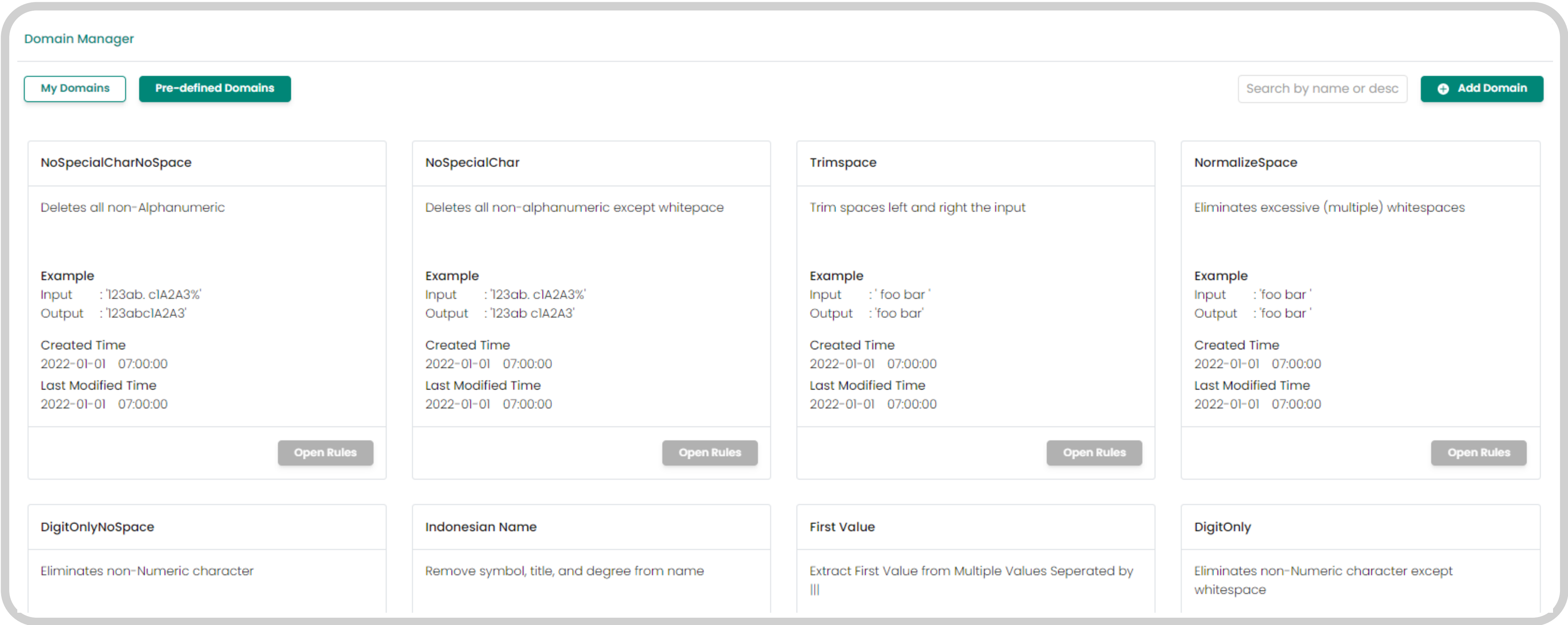


Figure 4. Domain Manager for Data Standardization

## Data Deduplication Summary

Xeratic LinkR allows data operators to quickly draw conclusions from existing dataset after matching and duplication process. This will enable a singular view of data status, providing a transparency for all data stakeholders. (See Figure 5. Data Profile Check)

It also came with additional feature, Data Scanner that allows you to scan your data from existing data matching result for further review and action. (See Figure 6)

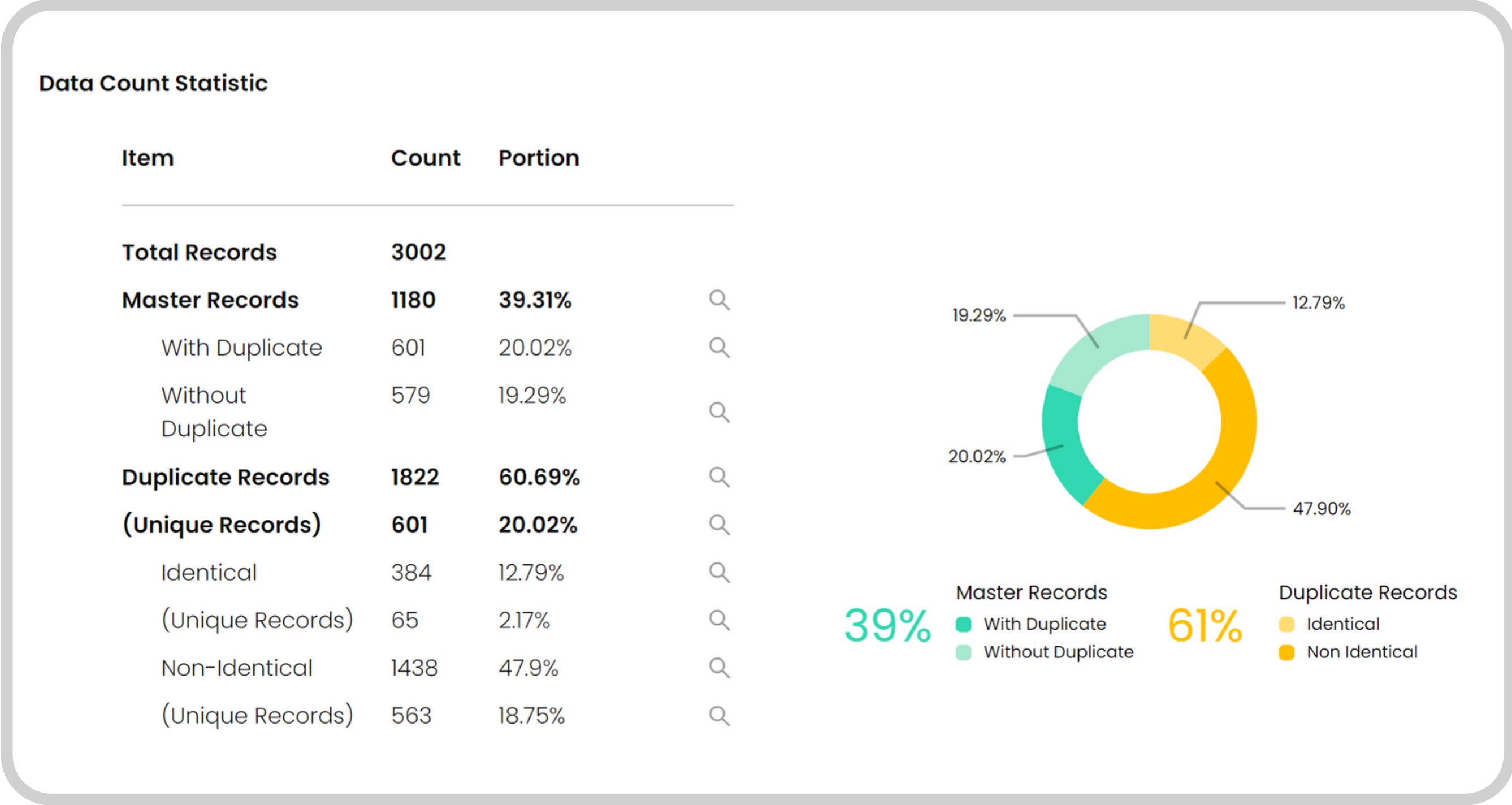


Figure 5. Data Deduplication Summary

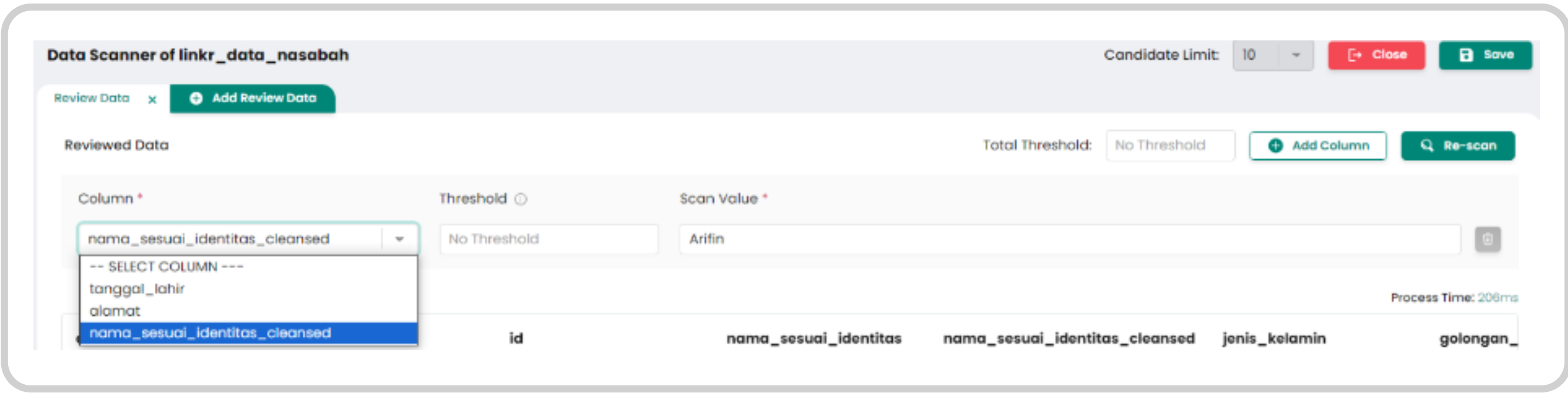


Figure 6. Data Deduplication Summary

Data Deduplication > Add New Dedup Config

Configuration Name \*

Advance Config

Cancel Save

Connection \*

sample\_connection

Table \*

mencariduplikasidatacustomer

Source Order By

+ Add Order By

ID Column \*

id

Golden Record Rule

Primary

Default

MAX

Secondary

id

MAX

Run Setting

☒ Initial☒ Do Sync

Deduplication Rule \*

Rule Playground

Rule Learning

Rule Templates

+ Add Rule

= Rule 5

Use rule threshold

☐

Is null similar

☒

Add Field

Skip

☐

Destination Column

---SELECT---

Comparator

NONE

Standarization Domain

NONE

Weight

0,5

Individual Threshold

0,5

Non-Repeat

☐

Figure 7. Configuration Editor

## Configuration Editor

Xeratic LinkR allows data operator to create custom configuration to test data sets on demand. The highest quality of data depends on finding the right scoring and weighting distributions that matches datasets within your organization environment. The configurator is the first step on how dirty data are being handled in the applications. (See Figure 7. Configuration Editor)



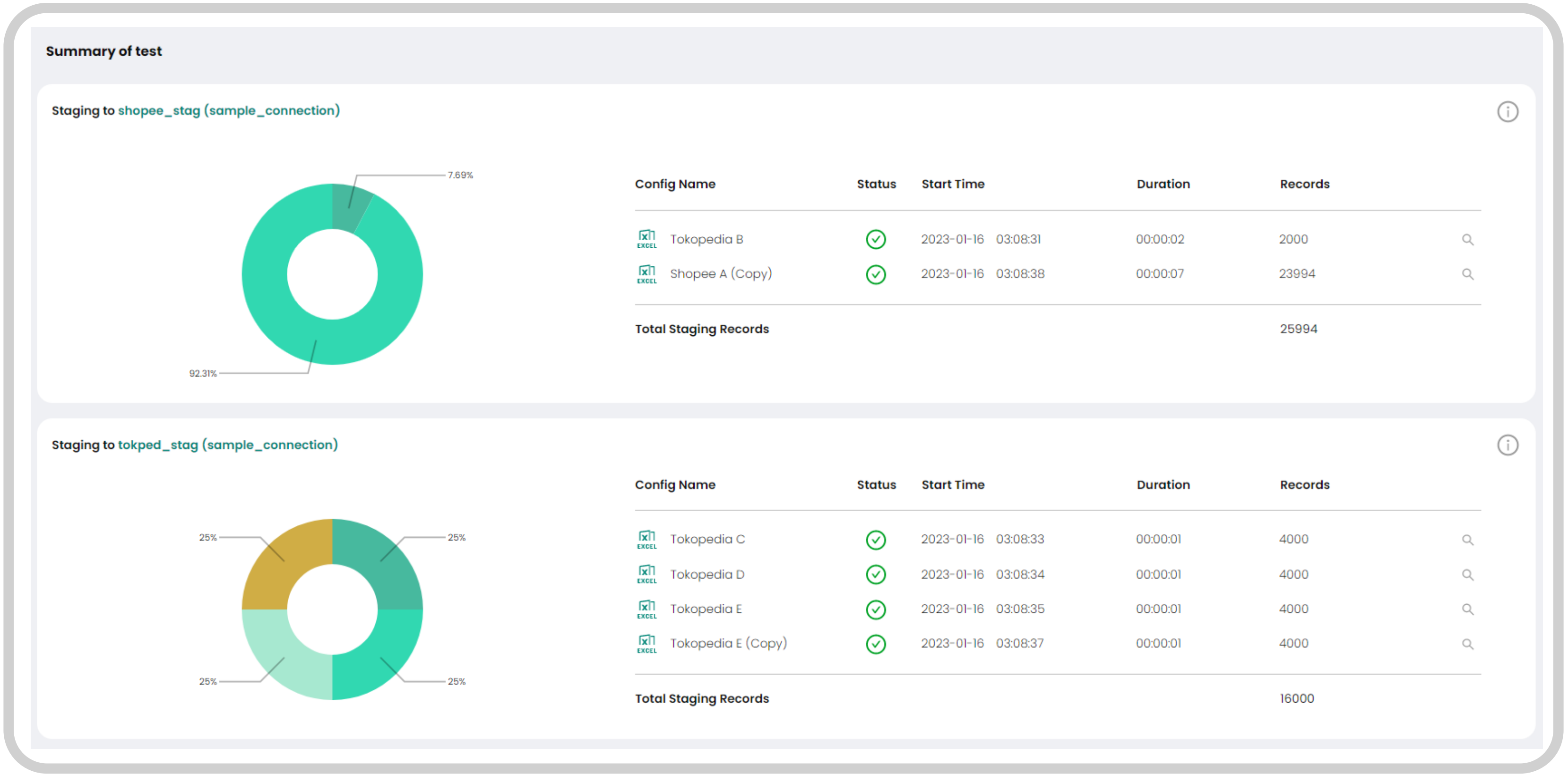
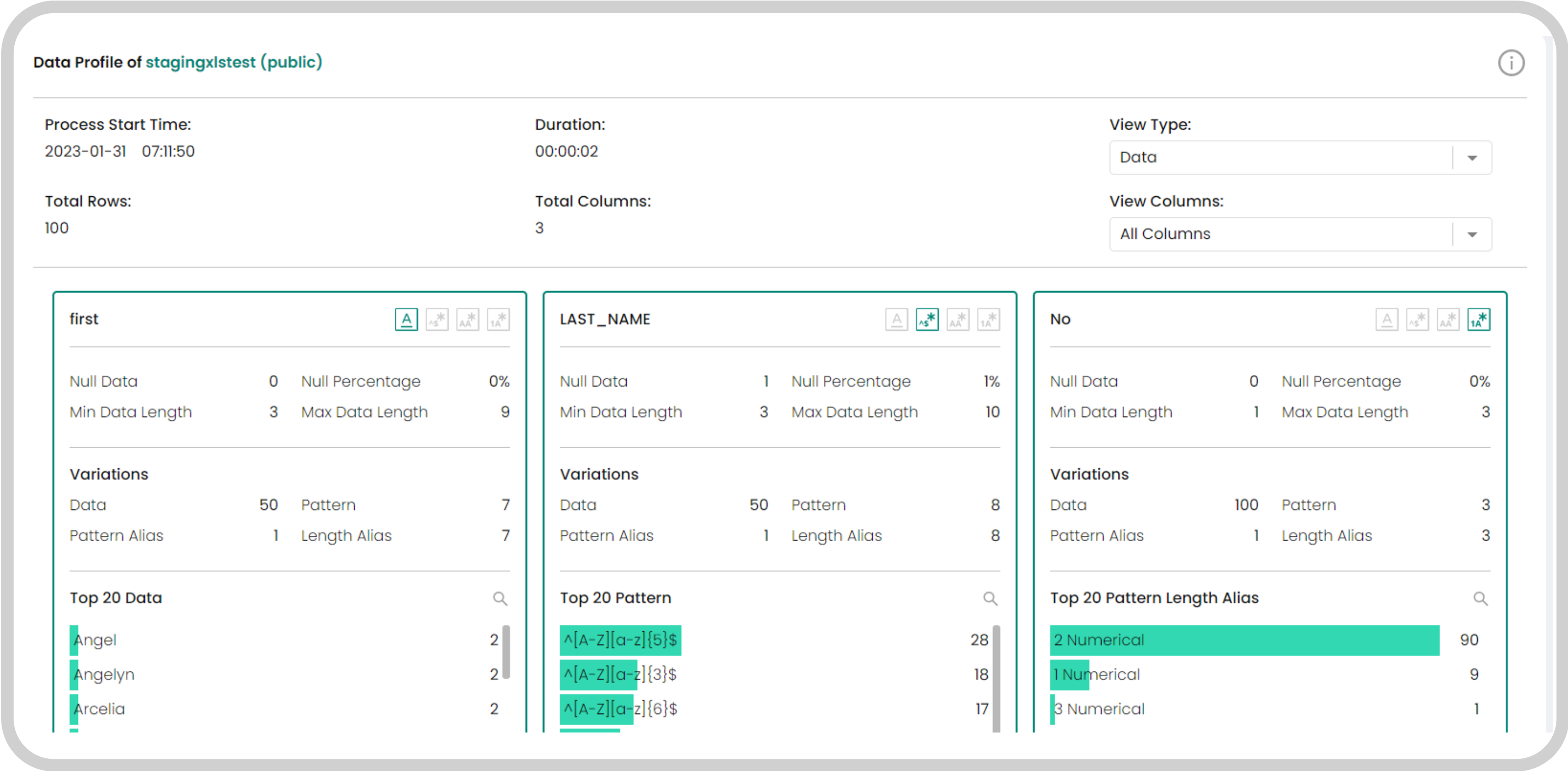


Figure 8. Data Staging Summary

Data Staging

Xeratic LinkR allows you to upload your excel files and other files desired to be processed in the staging phase. It allows you to choose and configure columns and which sheets to use and you can freely change the Start Column and Start Row in the settings. (See Figure 8. Staging Summary)



# REQUIREMENTS & PRE-REQUISITES

## Data Integration Pipeline

Data integration is the process of combining data from different sources into a single integrated database. The integration process involves ingestion with approaches like ETL (extract, transform, load), mapping, normalization, and transformation. Xeratic LinkR utilizes the capabilities of popular ETL tools to prepare the data ingestion into Xeratic LinkR to process.

## RDBMS

Xeratic LinkR is compatible with most commonly used opensource Relational Database Management System (RDBMS) applications such as SQL Server and PostgreSQL database format.

## Operating Systems

Xeratic LinkR is built on Java based applications and can be deployed to either Linux Server based operating systems or Microsoft Windows Server.

## Hardware & Software Specification

- Minimum 16 Cores CPU
- Minimum 32GB RAM
- Minimum 100GB SSD Based Storage (NVME based preferable)
- Linux / Windows Server Operating System\*
- RDBMS (PostgreSQL 9.1, or above, or Microsoft SQL Server 2014 or above)\*
- Java 8

\*Detailed specification need to be reconfirm by further technical assessment

LINKR